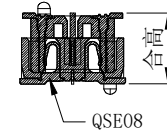
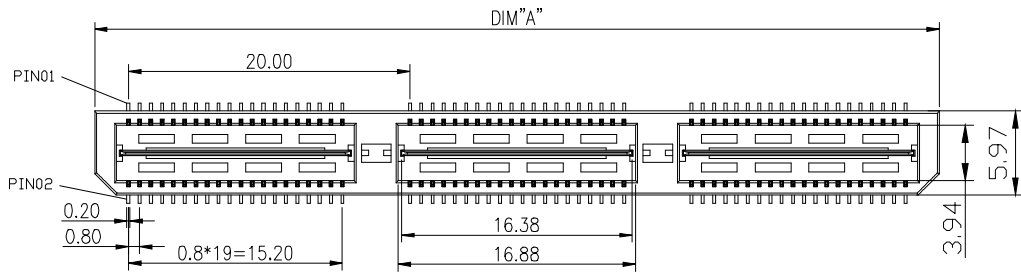
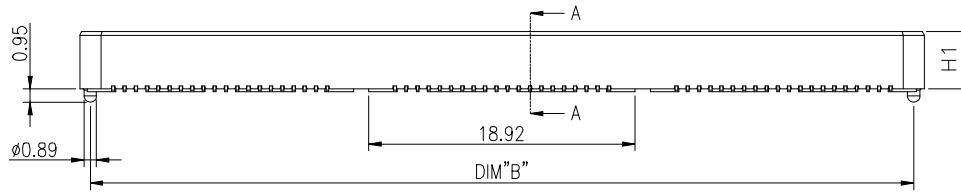


版次	变更内容	审核	日期



产品特性:

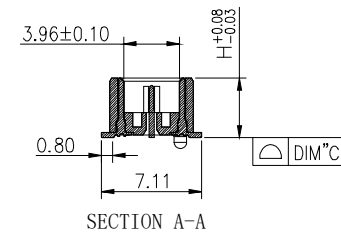
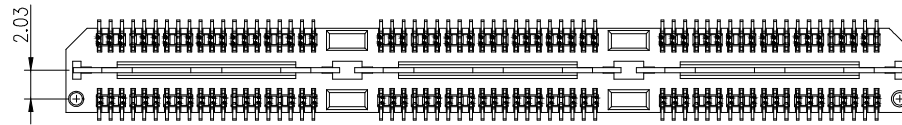
1. 绝缘体: LCP, UL 94V-0, 颜色: 黑色
2. 端子: 磷青铜
3. 电镀: 接触区镀金
4. 额定电流: 2 A (2个引脚供电)
5. 工作温度: -55° C TO +125° C
6. 额定电压: 225V AC



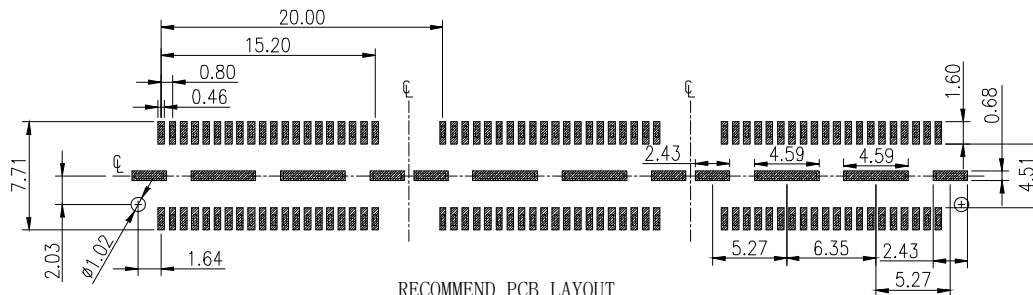
H1	H	合高
4.06	4.26	5.0
7.06	7.26	8.0
10.06	10.26	11.0
15.06	15.26	16.0

QTE08-SM-2*xxP X-XX

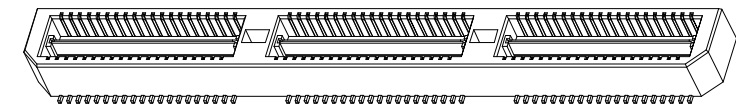
单排芯数: 塑高:
 接触电镀: 5G: 镀金 5u"
 10G: 镀金 10u"
 30G: 镀金 30u"



NO. OF contacts	Dimensions		
	A	B	C
2*20	20.00	18.48	0.10
2*40	40.00	38.48	0.10
2*60	60.00	58.48	0.15
2*80	80.00	78.48	0.15
2*100	100.00	98.48	0.15



RECOMMEND PCB LAYOUT
 TOLERANCE: ±0.05



公差:	版次:	A	上海宗进电子科技有限公司 Shanghai Zong Jin Electron Technology Co.LTD		
. X ±0.35	比例:		型号: QTE08-SM-2*xxPX	签名	日期
. XX ±0.25	单位:	mm			
. XXX ±2°	页码:	1/1	描述: 0.5mm BTB 高速接地插头	绘图:	
LNLB	图号:			确认:	
				审核:	