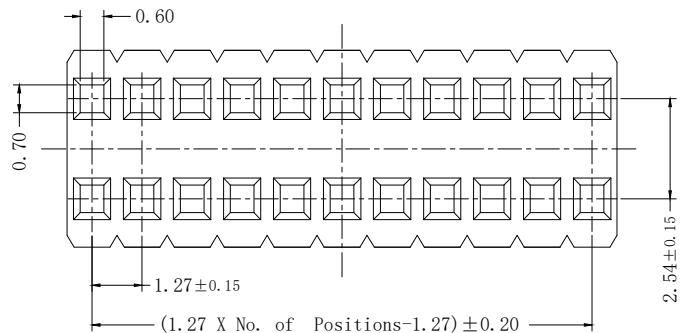
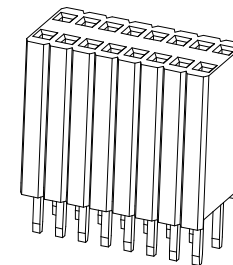


版次	变更内容	审核	日期

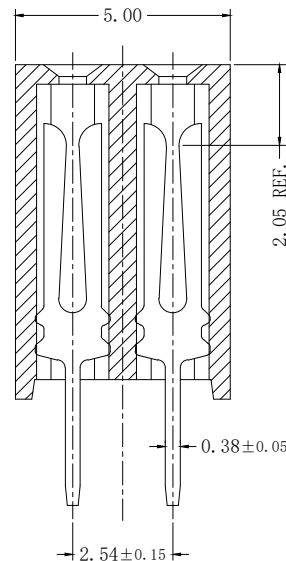
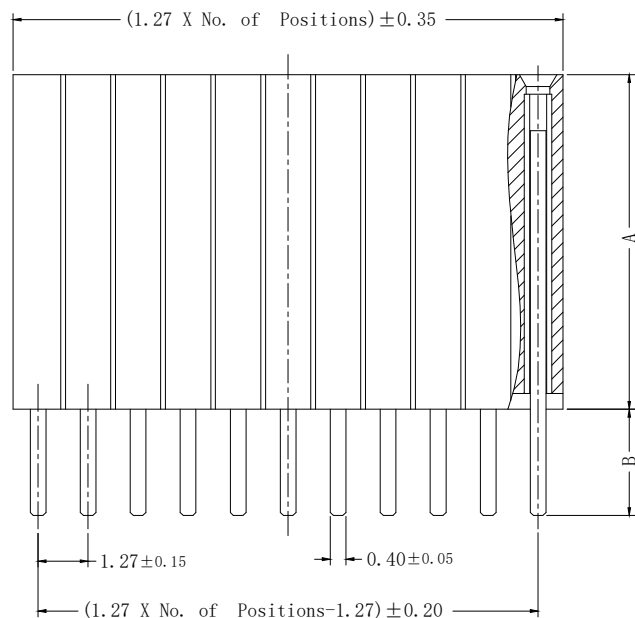


技术参数: SPECIFICATIONS

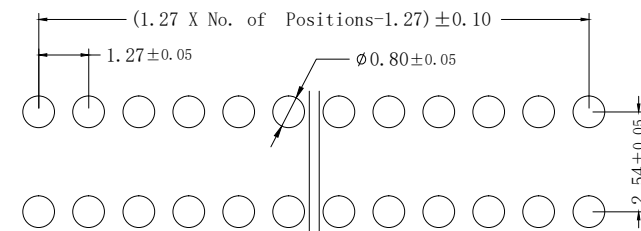
额定电流 (Current Rating): 1A
 绝缘电阻 (Insulation Resistance): 1000MΩ Min.
 接触电阻 (Contact Resistance): 20m Ω Max.
 额定电压 (Dielectric Withstanding Voltage): AC 500V
 工作温度 (Operating Temperature): -40 °C ~ +105°C
 最大加工温度 (Max Processing Temp): (230 °C for 30~60 seconds)
 (260 °C for 10 seconds)



接触材料 (Contact Material): 黄铜 (Brass), THICKNESS 0.40mm
 塑胶材料 (Insulator Material): 尼龙 (Nylon)-9T, UL 94V-0, 颜色: 黑色
 接触电镀 (Contact Plating): 镀金 (Gold plated)



203-1S-Y-1*xxxP X-A /B
 单排芯数: 01~50
 脚长: 2.7: 2.70mm
 8.5: 8.50mm
 接触电镀:
 G: 镀金Gold Flash
 1G: 镀金1u"
 3G: 镀金3u"
 10G: 镀金10u"



Recommended PCB Layout

弯曲度: 2*02P ~ 2*20P 0.30 MAX.
 2*21P ~ 2*35P 0.40 MAX.
 2*36P ~ 2*50P 0.50 MAX.

公差:	版次:	A	上海宗进电子科技有限公司		
. X ±0.35 . XX ±0.25 . XXX ±2° LNLB	比例:		Shanghai Zong Jin Electron Technology Co.LTD		
	单位:	mm	型号:	203-1/A-S-Y-2* <u>xxx</u> PX-A/B	签名
	页码:	1/1	描述:	1.27双排Y端直脚排母	日期
	图号:		图号:		绘图:
					确认:
					审核: