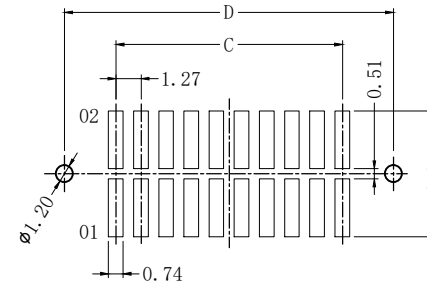
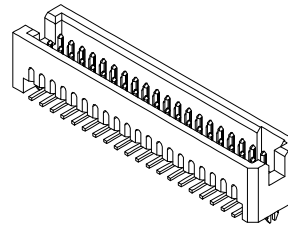
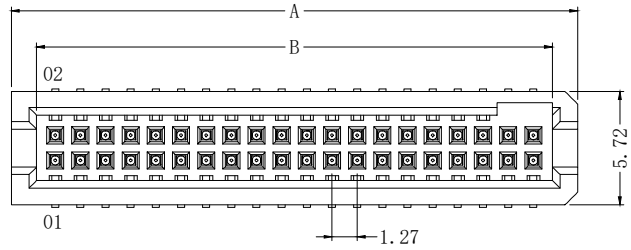
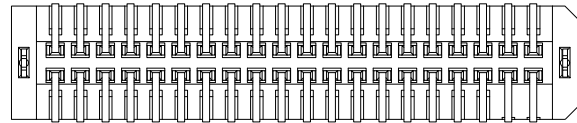
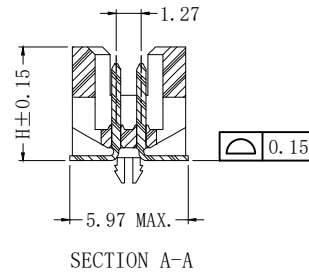
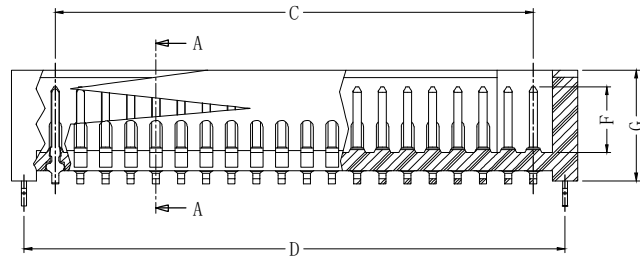


| 版次 | 变更内容 | 审核 | 日期 |
|----|------|----|----|
| | | | |



RECOMMEND PCB LAYOUT
TOLERANCE: ± 0.05



| NO. OF contacts | Dimensions | | | |
|-----------------|------------|--------|--------|--------|
| | A | B | C | D |
| 2*06 | 10.80 | 8.26 | 6.35 | 9.53 |
| 2*08 | 13.34 | 10.80 | 8.89 | 12.07 |
| 2*10 | 15.88 | 13.34 | 11.43 | 14.61 |
| 2*12 | 18.42 | 15.88 | 13.97 | 17.15 |
| 2*14 | 20.96 | 18.42 | 16.51 | 19.69 |
| 2*16 | 23.50 | 20.96 | 19.05 | 22.23 |
| 2*20 | 28.58 | 26.04 | 24.13 | 27.31 |
| 2*30 | 41.28 | 38.74 | 36.83 | 40.01 |
| 2*40 | 53.98 | 51.44 | 49.53 | 52.71 |
| 2*50 | 66.68 | 64.14 | 62.23 | 65.41 |
| 2*60 | 79.38 | 76.84 | 74.93 | 78.11 |
| 2*70 | 92.08 | 89.54 | 87.63 | 90.81 |
| 2*80 | 104.78 | 102.24 | 100.33 | 103.51 |
| 2*90 | 117.48 | 114.94 | 113.03 | 116.21 |
| 2*100 | 130.18 | 127.64 | 125.73 | 128.91 |

| F | G | H |
|------|-------|-------|
| 3.33 | 5.59 | 5.74 |
| 3.53 | 7.37 | 7.52 |
| 3.53 | 9.15 | 9.30 |
| 3.53 | 11.05 | 11.20 |

TFM127-SM-2*xxP X-X-LC

单排芯数: 塑高:
接触电镀:
10G: 镀金 10u"
30G: 镀金 30u"

- 产品特性:
1. 绝缘体: LCP, UL 94V-0, 颜色: 黑色
 2. 端子: 磷青铜
 3. 电镀: 接触区镀金
 4. 额定电流: 3.2 A (2个引脚供电)
 5. 工作温度: -55° C TO +125° C
 6. 额定电压: 250V AC
 7. 拔出力: 3.4N MIN.

| | | | | | |
|--|-----|-----|--|-----|----|
| 公差: | 版次: | A | 上海宗进电子科技有限公司 | | |
| . X ±0.35 . XX ±0.25 . XXX LNLB ±2° | 比例: | | Shanghai Zong Jin Electron Technology Co.LTD | | |
| | 单位: | mm | 型号: TFM127-SM-2*xxPX-X-LC | 签名 | 日期 |
| | 页码: | 1/1 | 描述: 1.27mm BTB 高可靠性插头 | 绘图: | |
| | 图号: | | | 确认: | |
| | | | | 审核: | |

4

3

2

1